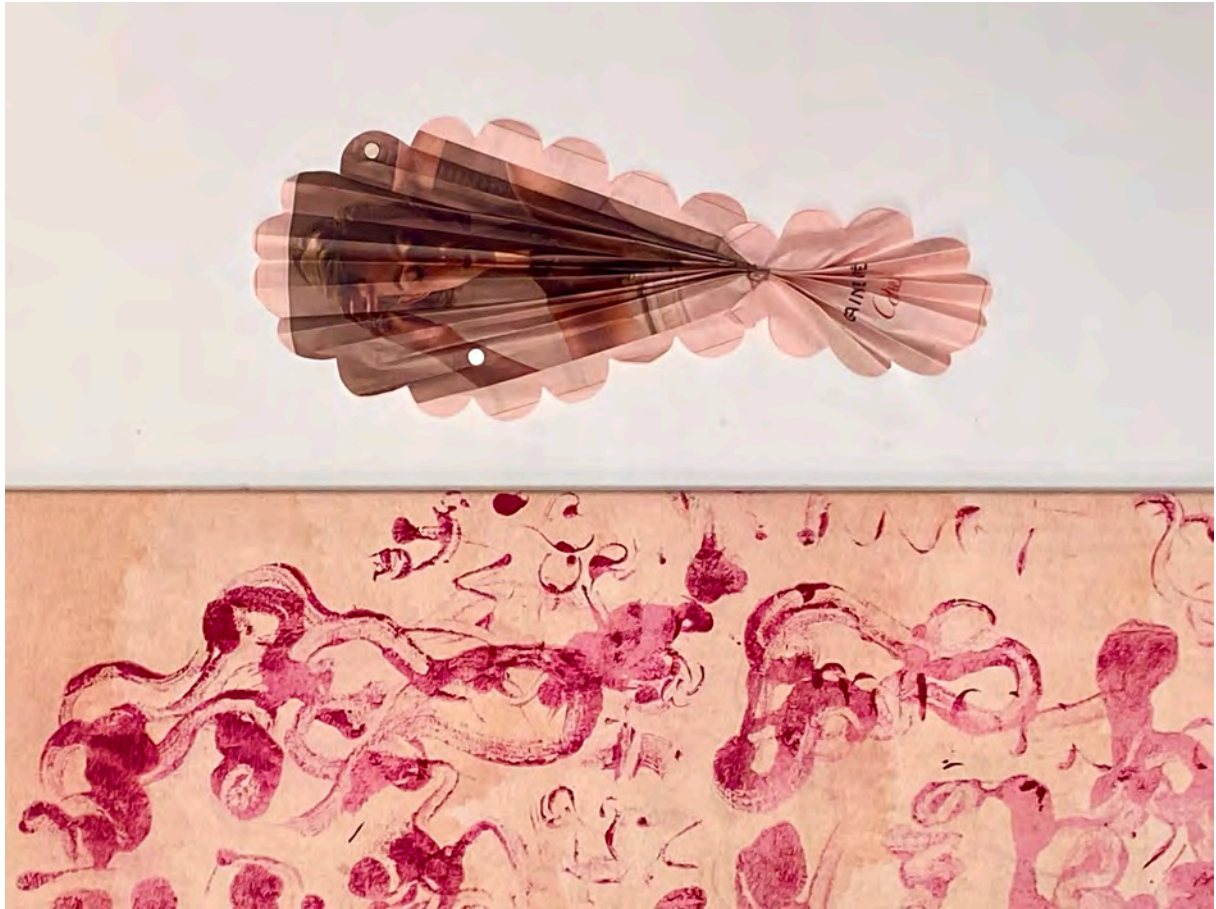


**DOMOBAAL**



**MIKEY CUDDIHY**  
**DON'T I KNOW MYSELF?**  
**21.09.24 - 02.11.24**

Don't I know myself?

*Vegetable Love*  
*Telepathic Vigilantes*

enter through the

*Iron Gates of Life*

while there is a

*Panel Discussion*

at the

*Geology Museum*

## DOMOBAAL

and

*Romola*

in a

*Little Black Dress*

(or a)

*Big Red Dress*

with

*Tassel-Woman*

and

*Pendant*

together with a whole

*Library Of Objects:*

*(High Heels*

*Tin-Opener*

*Scanty Knickers*

*A Pineapple ..... )*

while

*James*

(is here)

*in Limbo*

Domo Baal is delighted, proud (and tickled pink) to present Mikey Cuddihy's second solo exhibition in the gallery *Don't I Know Myself?* (named after a painting Cuddihy made in 1998), following on from *Broadsheet* early last year. Alas, we cannot look into the future as much as we try to, and think we understand of the present. However we can and do look back at the past (whether recent or far distant, personal or political) through the precision lens that the present allows. Identity is explored through its making, doing and thinking and delivered via its materiality.

Works by Mikey Cuddihy have been acquired by: Arts Council England, Contemporary Art Society, Deutsche Bank, Momart in London, Leicestershire Education Authority, Queen Elizabeth Hospital Cancer Centre in Birmingham, Thomas Frangenberg Collection, Soho House in London.

(image: '*Elle Fanning*' Fan, FT page (newsprint) pleated and stapled 56x23cm, 2023 (top); '*Panel Discussion*' gesso, Lascaux aquacryl on canvas, 178x144cm, 1997, stretched over a timber sub-frame (below, detail))

# DOMOBAAL

## LIST OF WORKS

### GROUND FLOOR



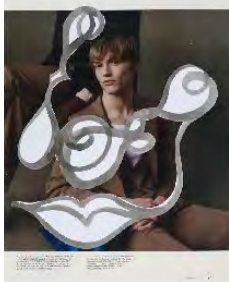
*Flounce*

charcoal on decorator's canvas, stretched and gathered,  
timber stretcher  
153 x 145cm, 2024 (stretcher 120 x 145cm)



*Armani*

watercolour on cartridge paper attached to FT HTSI magazine  
page  
paper 35 x 28cm, 2022  
in frame: 40.5 x 33cm (museum glass)



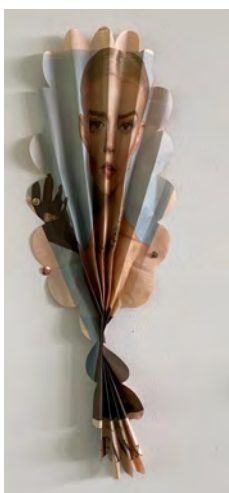
*Boy*

watercolour on cartridge paper attached to FT HTSI magazine  
page  
paper 35 x 28cm, 2022  
in frame: 40.5 x 33cm (museum glass)



*Max Mara*

watercolour on cartridge paper attached to FT HTSI magazine  
paper 35 x 28cm, 2022  
frame: 40.5 x 33cm (museum glass)

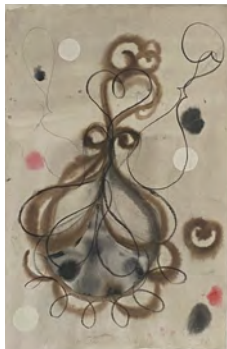


*Blonde*

Fan, FT page (newsprint) pleated and stapled  
56 x 23cm, 2023

## DOMOBAAL

### STAIRS



*The Women & Children*

Watercolour, pencil, conté, cut & painted paper on khadi paper (smooth)

66 x 43cm, 2024

in frame: 70 x 50cm (museum glass)



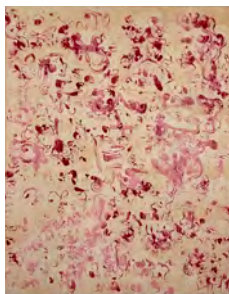
*Woman/Feather*

Watercolour, pencil, on khadi paper (smooth)

66 x 43cm, 2024

in frame: 70 x 50cm (museum glass)

### FIRST FLOOR LANDING

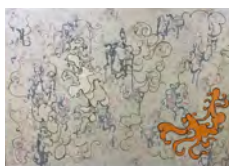


*Panel Discussion*

gesso, acrylic, canvas

178 x 144cm, 1996

(exhibited in British Abstract Painting 1, at Flowers East Gallery, 1996)



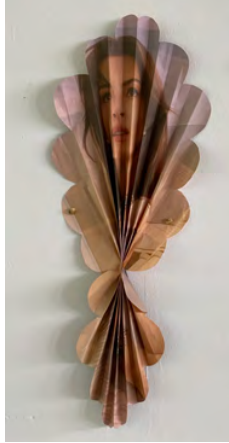
*Geology Museum*

xeroxed notebook pages, with painted & cut paper on canvas

146.5 x 209cm (approx), 2003

(exhibited at Peer Gallery London, 2003 Mikey Cuddihy: James in Limbo, with catalogue essay by Sally O'Reilly)

## DOMOBAAL



*Brunette*

Fan, FT page (newsprint) pleated and stapled  
56 x 23cm, 2023

## UPPER STAIRCASE WALL



*Big Red Dress*

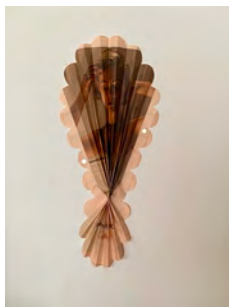
Lascaux Aquacryl on paper, backed on vilene & gathered  
145 x 120cm, 2024



*Little Black Dress*

Lascaux Aquacryl on khadi paper (smooth) & gathered  
145 x 120cm, 2024

## GALLERY



*Elle Fanning (first floor landing)*

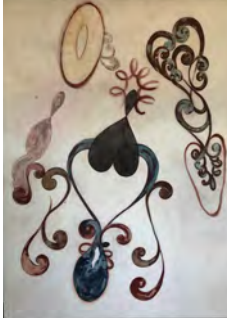
Fan, FT page (newsprint) pleated and stapled  
56 x 23cm, 2023



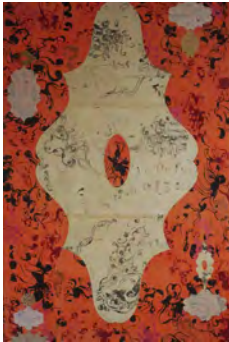
*Romola II*

gesso, acrylic, compressed charcoal on canvas  
244 x 183cm, 1989

## DOMOBAAL



*Iron Gates of Life: Pendant*  
gesso, graphite, acrylic on canvas  
244 x 183cm, 1991  
(Mikey Cuddihy: Iron Gates of Life, Flowers East, 1991,  
catalogue essay by Greg Hilty)



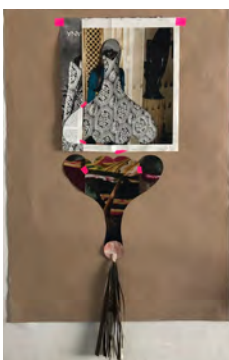
*Don't I Know Myself?*  
Gesso, acrylic, with painted & inscribed papers on canvas  
173 x 107cm, 1998  
(Mikey Cuddihy: Paintings, Beaconsfield Gallery, London  
1998/99;  
Girl: Walsall Gallery, 2001 & touring; British Abstract Painting,  
2001, Flowers East Gallery) (catalogues for all three exhibitions)



*Telepathic Vigilantes*  
gesso, acrylic & graphite on canvas with inscribed notepaper  
178 x 127cm, 2001



*James in Limbo*  
photocopied notebook pages, with painted & cut paper on  
canvas  
147 x 106cm, 2003  
(Mikey Cuddihy 'James in Limbo' Peer Gallery, 2003, catalogue)



*Tassel-Woman*  
Magazine pages, cut & collaged, with tape, fringed newsprint,  
staples on sugar paper  
105 x 70cm (framed) 2021

## DOMOBAAL

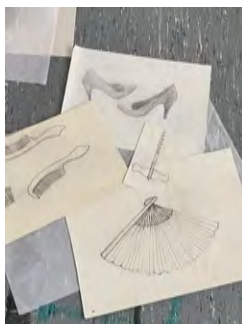


*Red Shape*  
chalk pastel on paper  
90 x 60 cm (framed in light oak) 1989

*Library of Objects*  
Pencil on assorted papers  
200 x 163cm, 1981-2001  
(29 drawings)



A collection of drawings that initially, were working drawings - information - for painted paper skirts, larger works on paper, and installations such as 'Raising the Roof' at Riverside Studios, London in 1985, (with Helen Chadwick & Annette Messenger); Conceptual Clothing, 1986, at Ikon Gallery, Birmingham, and Camden Arts Centre, London; Objects As Art, Plymouth Art Gallery; Edward Totah Gallery, London) (Three Women Artists, with Alexis Hunter & Paula Rego), 1981, and 1983. The *Knickers* (drawn later) are autonomous works in themselves, and a collection was selected for the Jerwood Drawing Prize, 2001, and East International, Norwich 2001 (selected by Mary Kelly & Peter Wollen).



+ examples of 16 other loose drawings in a portfolio