

DOMOBAAL

The Portrait Show 17.01.23 - 22.01.23

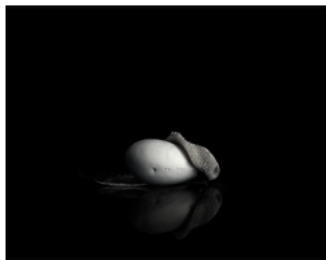
" ... there was something about their faces. It was nice or it was nasty. There was no telling." (from 'Why Don't You Dance?') Raymond Carver

Presenting portraits by any other means via collage, drawing, painting, photography, print, sculpture and many things in between, with:

Ailbhe Ní Bhriain, Alex Rich, Alice Wilson, Aubrey Haskard, The Rural College of Art (David Gates), Derrick Guild, James Lloyd, Joby Williamson, Lara Viana, Lee Edwards, Lothar Götz, Maud Cotter, Mhairi Vari, Mikey Cuddihy, Neil Zakiewicz, Nicky Hirst and Si Sapsford.

"you say it best when you say nothing at all." Donald Schlitz and Paul Overstreet

Ailbhe Ní Bhriain



Untitled (Still Life)
pigment print on japanese paper
20 x 25cm
frame: stained walnut, clarity glass
21 x 26cm
edition 10 (+5ap)
2020



Untitled (The Sublime and The Good)
pigment print on hand-coated cotton
39 x 59cm
frame: stained walnut, clarity glass, 40 x 60cm
edition 10 (+2ap)
2020



Untitled (Enigma)
pigment print on hand-coated aluminium
54 x 39.4cm
frame: stained walnut, clarity glass, 55 x 40cm
edition 10 (+2ap)

DOMOBAAL

Alex Rich



Scenario (Never Knowingly Understood)
2019
edition 6



Women of the world take over
(printed paper tape, 50 x 48mm with many thanks to Ivor Cutler)
2019

Alice Wilson



Argot 01
timber, paint, fixings
40 x 30 x 7.5cm
2022



Argot 02
timber, paint, fixings
40 x 30 x 7.5cm
2022

DOMOBAAL



Argot 03
timber, paint, fixings
40 x 30 x 7.5cm
2022

Aubrey Haskard

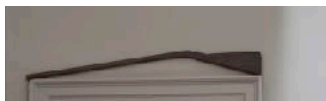


Cacpiss (Cholla)
C-Type print on Kodak Metallic, dry-mounted on aluminium
33 x 24cm
edition of 6 (+2ap)
2013

The Rural College of Art (David Gates)



found & forged (i,ii,iii)
cast aluminium (unique) 14.5(l) x 5.5(h) x 4.5(w)cm
2016
(from a series of 20 approx, cast from the artist's
grandfather's pipe using an abandoned motorway sign)



Village Pantomime Rifle
wood
2012
135 x 14 x 4cm

DOMOBAAL

Derrick Guild



Portrait After Kruseman, Hodges and Batoni

oil on linen in four individual frames:

Eye: After Jan Adam Kruseman's portrait of Alida Christina Assink, 1833, Rijkesmuseum Amsterdam, in gold plate oval frame, 6.4 x 5.1cm

Ear and Necklace: After Charles Howard Hodges portrait of Alida Gerbade, 1821, Museum De Lakenhal, Leiden, in gold plate frame, each frame 11.5 x 9cm

Mouth: After Pompeo Batoni's portrait of Frederick Lord North, 1753, National Portrait Gallery, London, oil on linen, 10.2 x 7cm
2020



The Chain That Lets Me Be, after Fabritius

acrylic on linen with gold plate chain

26 x 20cm

2022



Ever After After Batoni

After Pompeo Batoni's portrait of James Bruce of Kinnaird, 1762, National Portrait Gallery Edinburgh
oil on linen in gold plate oval frame
11.5 x 9cm

2022

DOMOBAAL



Button Descent After Danloux and Roslin

Buttons after Danloux's portrait of Admiral Duncan 1798

National Portrait Gallery Edinburgh

oil on linen in gold plate frame, 11.5 x 9cm

Eye After Kruseman's portrait of Catharina Annette Fraser, 1834

oil on linen in gold plate frame 10.2 x 7cm



Gavin Hamilton After Archibald Skirving 1788

oil on linen in four individual gold plate frames, dimensions variable

Eye, 6.4 x 5.1cm

Nose and Mouth, 10.2 x 7cm

Ear, 10.2 x 7cm

Collar, 11.5 x 9cm



History Voice, after Hodges

oil on linen in three individual frames, dimensions variable

Bottom left: from portrait of Alida Gerbade, Museum De Lakenhal 1829, 10.2 x 7cm

Top middle: from portrait of Pieter Ernst Praetorius, 1827, Rijksmuseum, 10.2 x 7cm

Right: Portrait of Louis Napoleon, 1809, Rijksmuseum, 11.5 x 9cm

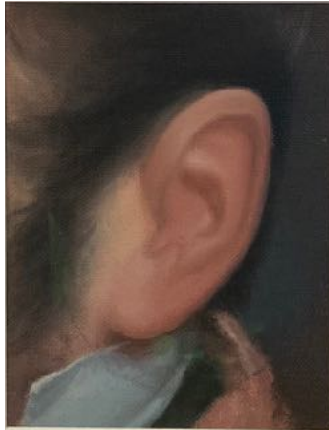


Charm

oil on cast resin fig leaf with costume earrings

2022

DOMOBAAL



Ear of Louis Napoleon, After Charles Howard Hodges, 1809,
Rijksmuseum
oil on linen
image 13.5 x 10cm
frame 33 x 27cm
2022

James Lloyd



Colander
oil on canvas
14 x 16 inches (35.6 x 40.6cm)
2022



Toilet Rolls
oil on canvas
12 x 10 inches (30.5 x 25.5cm)
2022

Joby Williamson



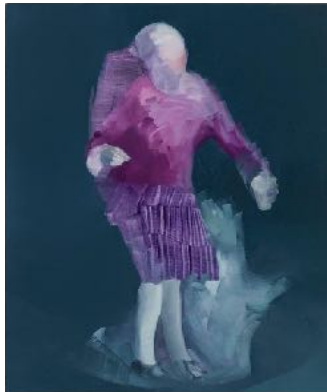
Quarrel
a pair of etched drawing pins
edition of 30
2016

DOMOBAAL

Lara Viana



Untitled
oil on board
35 x 25 cm
2019



Untitled
oil on board
35 x 25 cm
2019



Untitled
oil on board
40 x 35 cm
2019

DOMOBAAL

Lee Edwards



I was too shy
oil on conker
3.5 x 3 x 1.5cm
2010



Babes in the Wood
oil on wood
2010
3 x 3 x 5cm



I don't fancy you, Lee
oil on conker
2010
3 x 3 x 1.5cm

DOMOBAAL



A Broken Man
oil on oak
2011
6.8 x 6 x 2cm



Fades to memory
oil on oak
2011
18 x 15 x 2cm



In the morning
oil on wood
2011
6.7 x 4.3 x 8.3cm



My Aunt's Friend
oil on wood
2011
4 x 3.1 x 3.5cm

DOMOBAAL



She didn't smile so much after I started seeing Zoe
oil on oak
2009
4 x 4.5cm



We kissed in the rain
oil on pine
2009
19 x 12.5 x 2cm



Alas, she never knew
oil on wood
2009
2.5 x 3cm

DOMOBAAL

Lothar Götz



Figurine - Rotating over Beige
acrylic on linen
70 x 55cm
2016

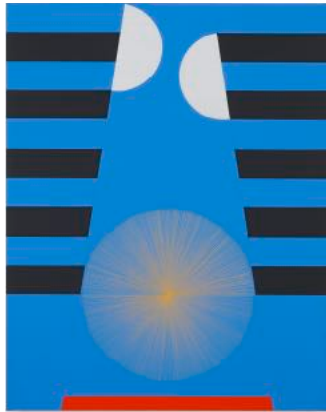


Figurine Konstruktiv
acrylic, pencil and colour pencil on linen
70 x 55cm
2015



Figurine - Minimal with gold and green
acrylic and pencil on linen
70 x 55cm
2016

DOMOBAAL



Figurine Oriental
acrylic, pencil and colour pencil on linen
2017
70 x 55cm

Maud Cotter



found
black cement fondue, ground, dental plaster, stainless steel,
hemp cord
7 x 9 x 9cm
presented in a box, made in collaboration with Claire Power:
Windsor Bookcloth, marble paper, greyboard, blind embossed
text
7.5 x 10.5 x 15.5cm
edition: 10, 2016



a solution is in the room (text)
Artist's edition: a concertina presented in a box made in
collaboration with Coracle Press
concertina: lambeth cartridge, ink, 199 x 8 x 0.25cm
box: ink, card, 9.5 x 9.5 x 4.1cm
Coracle Press 2017, edition: 100



stone extension one
15 x 22 x 28cm
stone, Lafarge prestia, rubber
2018

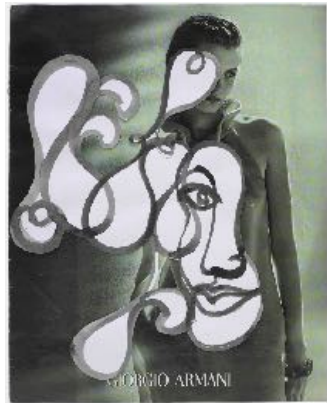
DOMOBAAL

Mhairi Vari



Parched (cup)
carved graphite, tea, milk
8.5 x 7.5 x 6cm
2010
(hand-carved by the artist from the geological graphite bricks from of the BNF reactor archive)

Mikey Cuddihy



Armani
watercolour on cartridge paper attached to FT HTSI magazine page
paper 35 x 28cm
frame (museum glass)
2022



Boy
watercolour on cartridge paper attached to FT HTSI magazine page
paper 35 x 28cm
frame (museum glass)
2022

DOMOBAAL



Max Mara

watercolour on cartridge paper attached to FT HTSI magazine
page
paper 35 x 28cm
frame (museum glass):
2022

Neil Zakiewicz



God of the Gaps (Visage Series)

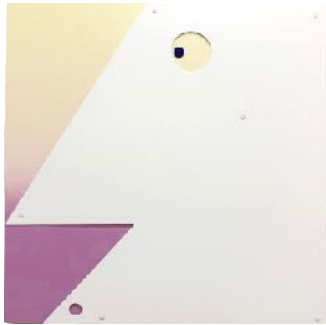
polyurethane spray paint on steel
2023
77 x 50cm



Thumb

series of unique clay works
4 x 3.5 x 1cm
2018

DOMOBAAL



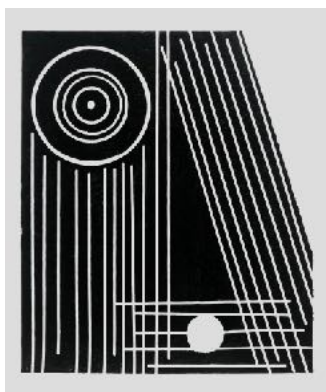
Blinky (Visage Series)
polyurethane spray paint on steel
2023
50 x 50cm



Sigma (Visage Series)
lino print on 190gsm acid-free paper
cut using a circular saw and power drill
edition of 5 (+2ap)
2022
paper: 25 x 21cm
frame: 29 x 25cm



God of the Gaps (Visage Series)
lino print on 190gsm acid-free paper
cut using a circular saw and power drill
edition of 5 (+ap)
2022
paper: 50 x 39cm
frame: 54 x 43cm



Forest Ranger (Visage Series)
lino print on 190gsm acid-free paper
cut using a circular saw and power drill
edition of 5 (+2ap)
2022
paper: 34 x 30cm
frame: 38 x 34cm

DOMOBAAL

Nicky Hirst



Belle No.3

magazine page

paper: 24 x 16.5cm

frame (museum glass AR/UV 70%): 29 x 21cm

2012

*"The Queen is dead, boys,
And it's so lonely on a limb"*



The Shepherd

magazine page

paper: 24 x 16.5cm

frame (museum glass AR/UV 70%): 29 x 21cm

2012



Belle No.5

magazine page

paper: 24 x 16.5cm

frame (museum glass AR/UV 70%): 29 x 21cm

2012

DOMOBAAL



Belle No.12
magazine page
paper: 24 x 16.5cm
frame (museum glass AR/UV 70%): 29 x 21cm
2018

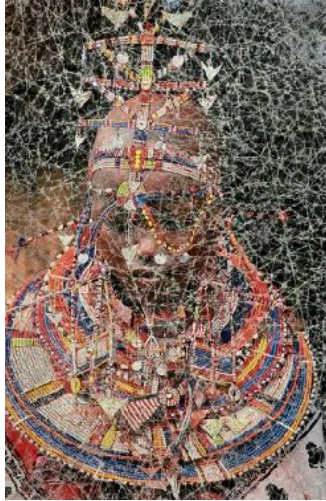


Belle No.15
magazine page
paper: 24 x 16.5cm
frame (museum glass AR/UV 70%): 29 x 21cm
2018



Belle No.13
magazine page
paper: 24 x 16.5cm
frame (museum glass AR/UV 70%): 29 x 21cm
2018

DOMOBAAL



Belle No.9
magazine page
paper: 24 x 16.5cm
frame (museum glass AR/UV 70%): 29 x 21cm
2017



Belle No.6
magazine page
paper: 24 x 16.5cm
frame (museum glass AR/UV 70%): 29 x 21cm
2012



Belle No.11
magazine page
paper: 24 x 16.5cm
frame (museum glass AR/UV 70%): 29 x 21cm
2018

DOMOBAAL



Belle No.1

magazine page

paper: 24 x 16.5cm

frame (museum glass AR/UV 70%): 29 x 21cm

2012



Belle No.18

magazine page

paper: 24 x 16.5cm

frame (museum glass AR/UV 70%): 29 x 21cm

2018



Belle No.2

magazine page

paper: 24 x 16.5cm

frame (museum glass AR/UV 70%): 29 x 21cm

2012

DOMOBAAL

Si Sapsford



Bread Line

biscuits: size variable between 7.5 and 8.5cm diameter
box for biscuits: 10 x 10.5 x 2cm
2023



Dysentry

biscuits: size variable between 7.5 and 8.5cm diameter
box for biscuits: 10 x 10.5 x 2cm
2023



Small Beer

etched pint glass
(quote from Daniel Buren reflecting on thoughts about art)
8.5 x 8.5 x 14cm
1999

DOMOBAAL



Diary Antibes to Palma 1986

etched glass jar

(etched taken from a note book of the first leg of an Atlantic crossing made in 1986 and recording the mundane everyday thoughts of life at sea)

2022



Log Book

etching on 5 litre glass demijohn

34 x 26.8 x 26.8cm

2022