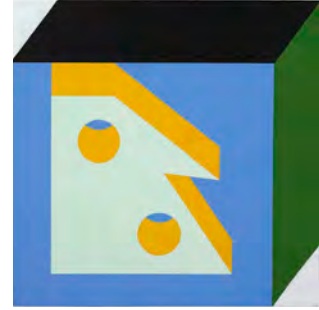
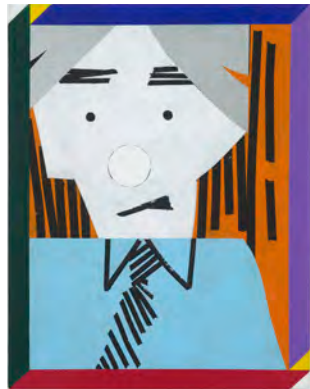


DOMOBAAL



NEIL ZAKIEWICZ BLINKYS

An anticipatory screen cursor, a puppet's discoid eye moving between open and lash-shut; a spectral recollection; the stuttering gas-tube signage above a members' club; a German minimalist. It could be a lost episode of The Mighty Boosh.



Blinkys is at once everything it says on the tin and the magic bits of decision-making we rarely think about but that define our assessments of and interactions with others. It pays playful homage to notions of portraiture and painting in a time of rampant selfie-ism and algorithmic image generation. And, the long and twisty history of creators as 'characters', interesting people - famous or otherwise - known through their work or perhaps intimately. But, here, all sitters have been referentially rinsed, marinated in the mind's eye to arrive canvas-first as a riotous universe of remodelled signifiers.

We understand people as much through what they do and create as through how they appear, and in Neil Zakiewicz's world, visual appearances are as mercurial and wilful as the words that might be used to describe them. Sometimes, they are simply proper nouns in designer fonts, all Euclidean angles chromatically Cirque du Soleil-ed into being via a joyful Ab-Ex palette. The artist himself can be found among the fray of creatives that move him - rhomboid, hole-punch-eyed and rendered in Guston pink.

Where the titular art figure Palermo freed painted 'objects' from their contexts, Zakiewicz appears to have ushered them back into each ground on the Vinted promise of being used to rebuild something, or someone, anew. Yet, each canvas is bordered by a box-like frame - Mobius neo-geo strips that remind us of its objecthood, unchanged through time. A nod perhaps to the enduring effectiveness of painting and its oldest tropes, or maybe just to the fact he has found a new love for them both.



domo baal is very much looking forward to presenting Neil Zakiewicz's third solo in the gallery following on from **Working** in 2008 (with a text by John Chilver) and **Come Alive** in 2022. With many thanks to Rebecca Geldard appleandhat.com for the text and Andy Keate for the photography.

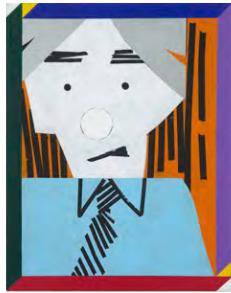
2025 exhibitions:

Lee Edwards, Alice Wilson, Nicky Hirst, Kristaps Ancāns, Dermot O'Brien.

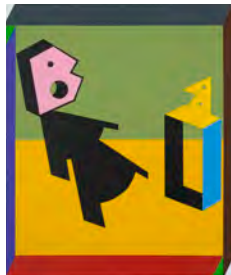


DOMOBAAL

... WORKS:



AW
ACRYLIC ON CANVAS
STRETCHED OVER A TIMBER SUBFRAME
45 X 35CM
2024



DB
ACRYLIC ON CANVAS
STRETCHED OVER A TIMBER SUBFRAME
60 X 50CM
2024



LG
ACRYLIC ON CANVAS
STRETCHED OVER A TIMBER SUBFRAME
40 X 30CM
2024



SLOPE
ACRYLIC ON CANVAS
STRETCHED OVER A TIMBER SUBFRAME
60 X 55CM
2024



MZ
ACRYLIC ON BIRCH PLY ON TIMBER SUBFRAME
40 X 30CM
2024

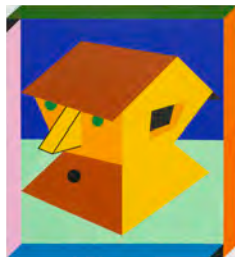
DOMOBAAL



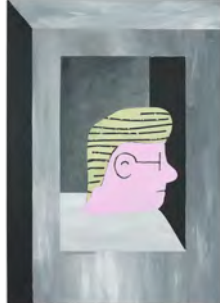
THE SCENE
ACRYLIC ON WOOD PANEL ON TIMBER SUBFRAME
20 X 18CM
2024



NZ
ACRYLIC ON BIRCH PLYWOOD ON TIMBER SUBFRAME
40 X 30CM
2024



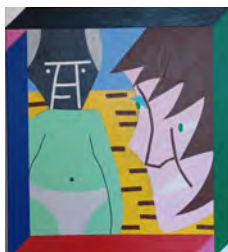
YELLOW HOUSE
ACRYLIC ON CANVAS
STRETCHED OVER A TIMBER SUBFRAME
61 X 56CM
2024



AS
ACRYLIC ON CANVAS
STRETCHED OVER A TIMBER SUBFRAME
100 X 70CM
2024



SWELL
ACRYLIC ON WOOD PANEL ON TIMBER SUBFRAME
49 X 35CM
2024



JO AND PABLO
ACRYLIC ON CANVAS
STRETCHED OVER A TIMBER SUBFRAME
55 X 50CM
2024

DOMOBAAL



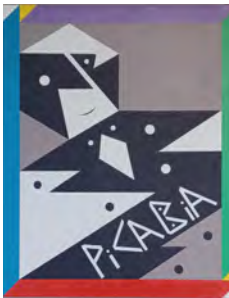
STATES

ACRYLIC ON WOOD PANEL ON TIMBER SUBFRAME
29.5 X 18CM
2024



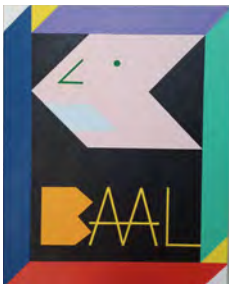
HEAD RUSH

ACRYLIC ON WOOD PANEL ON TIMBER SUBFRAME
48 X 36CM
2024



FP

ACRYLIC ON CANVAS
STRETCHED OVER A TIMBER SUBFRAME
82 X 67CM
2024



BAAL

ACRYLIC ON CANVAS
STRETCHED OVER A TIMBER SUBFRAME
50 X 40CM
2024

+

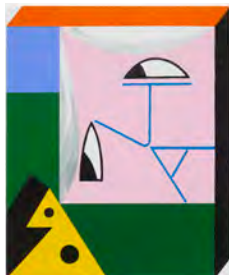
ALSO AVAILABLE



AIM HIGH

ACRYLIC ON WOOD PANEL ON TIMBER SUBFRAME
49.5 X 31CM
2024

DOMOBAAL



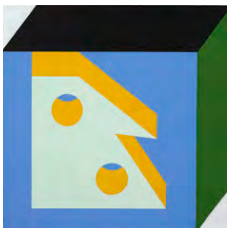
JA
ACRYLIC ON WOOD PANEL ON TIMBER SUBFRAME
41 X 34CM
2024



TUMBLE
ACRYLIC ON CANVAS STRETCHED OVER A TIMBER SUBFRAME
45 X 40CM
2024



YOU ME AND HIM
ACRYLIC ON CANVAS
STRETCHED OVER A TIMBER SUBFRAME
45 X 35CM
2024



K
ACRYLIC ON CANVAS
STRETCHED OVER A TIMBER SUBFRAME
46 X 46CM
2023



MY ILK
ACRYLIC ON CANVAS
STRETCHED OVER A TIMBER SUBFRAME
50 X 40CM
2024

+

VISAGE SERIES

22 LINO PRINTS ON 190GSM ACID-FREE PAPER, ALL CUT USING A CIRCULAR SAW AND POWER DRILL, SOME EDITIONED 5+1 AND OTHERS AS UNIQUE PRINTS

DOMOBAAL



SIGMA (VISAGE SERIES)
PAPER: 25 X 21CM
FRAME: 29 X 25CM
2022
EDITION OF 5 (+1AP)



GOD OF THE GAPS (VISAGE SERIES)
PAPER: 50 X 39CM
FRAME: 54 X 43CM
2022
EDITION OF 5 (+1AP)



GOO (VISAGE SERIES)
38 X 28.5CM (IN FRAME)
2024
EDITION OF 5 (+1AP)



FELIX THE HELIX (VISAGE SERIES)
34 X 27CM (IN FRAME)
2022
EDITION OF 5 (+1AP)



IRON MIKE (VISAGE SERIES)
34 X 27CM (IN FRAME)
2023
EDITION OF 5 (+1AP)



BLOCKADE (VISAGE SERIES)
29.5 X 21CM (IN FRAME)
2022
EDITION OF 5 (+1AP)

DOMOBAAL



BLINKY (VISAGE SERIES)
36 X 36CM (IN FRAME)
2023
UNIQUE PRINT



GIRL BITES DOG (VISAGE SERIES)
20 X 20CM (IN FRAME)
2023
EDITION OF 5 (+1AP)

+ ALSO AVAILABLE



SPEAKER (VISAGE SERIES)
36 X 36CM (IN FRAME)
2023
UNIQUE PRINT



SPEAKER NO NOSE (VISAGE SERIES)
36 X 36CM (IN FRAME)
2023
UNIQUE PRINT

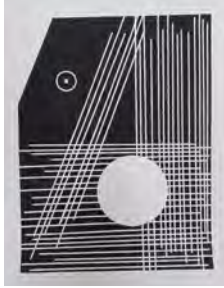


SIMPLE JACK (VISAGE SERIES)
47 X 30.5CM (IN FRAME)
2022
EDITION OF 5 (+1AP)



KIPPY (VISAGE SERIES)
40 X 29.5CM (IN FRAME)
2022
EDITION OF 5 (+1AP)

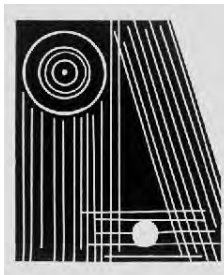
DOMOBAAL



WHALE (VISAGE SERIES)
49.5 X 39.5CM
2022
UNIQUE PRINT



TALKING HEAD (VISAGE SERIES)
46.5 X 36.5CM
2023
EDITION OF 5 (+1AP)



FOREST RANGER (VISAGE SERIES)
PAPER: 34 X 30CM
FRAME: 38 X 34CM
2022
EDITION OF 5 (+1AP)



DYNAMAXION MAN (VISAGE SERIES)
35 X 21CM (IN FRAME)
2022
EDITION OF 5 (+1AP)



PERSON (VISAGE SERIES)
2023
UNIQUE PRINT
36 X 36CM (IN FRAME)
2023
UNIQUE PRINT



PERSONA (VISAGE SERIES)
36 X 36CM (IN FRAME)
2023
UNIQUE PRINT

DOMOBAAL



PETER LORRE'S RASKOLNIKOV (VISAGE SERIES)
27 X 24CM (IN FRAME)
2022
EDITION OF 5 (+1AP)



IDENT (VISAGE SERIES)
36.5 X 36.5CM (IN FRAME)
2023
UNIQUE PRINT



BELMONDO (VISAGE SERIES)
25 X 21CM (IN FRAME)
2022
EDITION OF 5 (+1AP)



BED HEAD (VISAGE SERIES)
29 X 18CM (IN FRAME)
2023
EDITION OF 10 (+1AP)